

How-To Guide Configuring Online/ Offline Indicator

Document Type: External

Document Version: 1.0

Date: 12/08/2024

Author: Rasangi De Silva

Table of Contents

| | |
|--|----|
| Table of Contents | 2 |
| Introduction | 3 |
| Overview | 3 |
| Offline indicator Configuration | 4 |
| Enactor.XML | 4 |
| POS Terminal / POS Terminal Template | 5 |
| Account Credentials Maintenance | 6 |
| Broadcasting Data | 8 |
| POS functionality..... | 9 |
| About This Document | 10 |
| Document Context | 10 |
| Document Inquiries..... | 10 |
| Document History | 11 |

Introduction

Enactor transaction queue status can be used to identify if the transactions undertaken on a POS device have been submitted to the Estate Manager or Store Server. Any transactions failing to submit could be an indicator that the POS is offline.

If a transaction message fails to submit from the message queue, the POS indicator will alert the user that the POS is offline by setting a red indicator in the top right-hand corner of the screen. This indicator will be visible on all POS screens including the sign on screen, basket display, CRM and Rich Product Search etc. If the message queue is successful in submitting its transactional data, the indicator will be set to green.

Transaction data includes sign on events, transactions, Cash Management and other event types.

If a POS is offline and the indicator is set to red, the indicator will switch to green when the POS transaction message queue begins to submit again. If the POS has a backlog of transaction data to be sent, it will update the indicator on the first successful message sent.

Overview

This guide covers the following configuration:

- **enactor.xml** – Several properties in enactor.xml must be added.
- **POS Terminal Template / POS Terminal** – A configuration change is made in the POS Terminal or POS Terminal Template.
- **Account Credentials** – A new Account Credential must be added.

Pre-Requisites

- MESSAGE_SERVICE Account Credential is defined (this is included in Enactor's default data).

Offline Indicator Configuration

enactor.xml

The behaviour of the Offline Indicator can be configured using properties in the enactor.xml file on the POS.

When building the POS, values can be entered against the following installer.ini properties to populate them in the enactor.xml file.

| Installer.ini property | enactor.xml property | Example Data | Detail |
|--|---|--------------|--|
| ENDPOINT_MONITOR_ENABLED | EndpointMonitor.Enabled | true | Defaults to True. If set to False the Endpoint Monitor is disabled. |
| ENDPOINT_MONITOR_MONITORING_INTERVAL_SECONDS | EndpointMonitor.MonitoringIntervalSeconds | 5 | Defaults to 30 seconds unless configured. The number of seconds between writes of a database record for each endpoint monitoring tag. |
| ENDPOINT_MONITOR_PURGING_INTERVAL_SECONDS | EndpointMonitor.PurgingIntervalSeconds | 30 | Defaults to 1800 seconds (30 minutes) unless configured. The number of seconds between purges of the records for each endpoint monitoring tag. |
| ENDPOINT_MONITOR_ENTRY_COUNT_PER_TAG | EndpointMonitor.EntryCountPerTag | 5 | Default to 10 unless configured. The number of records per endpoint monitoring tag to retain in the database. |

Below is an excerpt from an example enactor.xml elements with sample values:

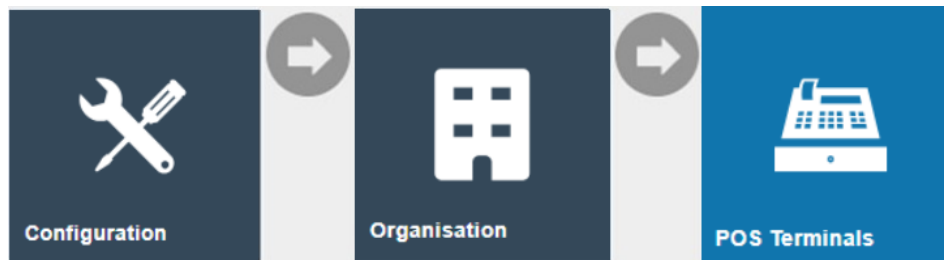
```
<core:coreProperty name="EndpointMonitor.Enabled" value="true"/>
<core:coreProperty name="EndpointMonitor.EntryCountPerTag" value="5"/>
<core:coreProperty name="EndpointMonitor.MonitoringIntervalSeconds" value="5"/>
<core:coreProperty name="EndpointMonitor.PurgingIntervalSeconds" value="30"/>
```

POS Terminal / POS Terminal Template

Offline Indicator needs to be enabled for the POS Terminal.

If Offline Indicator is enabled for multiple POS Terminals, the configuration can be added to the POS Terminal Template that those devices are configured to use.

Navigate to POS Terminal Maintenance using the Search or the path Configuration -> Organisation -> POS Terminals



In General tab, Overview sub tab, mark **Enable Endpoint Status Monitor** as true.

POS Terminal Maintenance

[Save](#) [Cancel](#)

You are editing POS terminal for device ID 'posraspd@0003.enactor' at store 'UK Oxford Street' based on template 'Standard POS Terminal Template'

General | Peripherals | Printing | Day Start | Day End | User Interface | Tax | Online Auth | Loyalty | Groups | External | Attributes | Tendering

Overview | Transactions

Price Group: -

Is Remote Terminal:

Training Mode:

Disable Emailing Receipts In Training Mode:

Capture privacy policy status:

Enable Endpoint Status Monitor:

Support Roaming Mode:

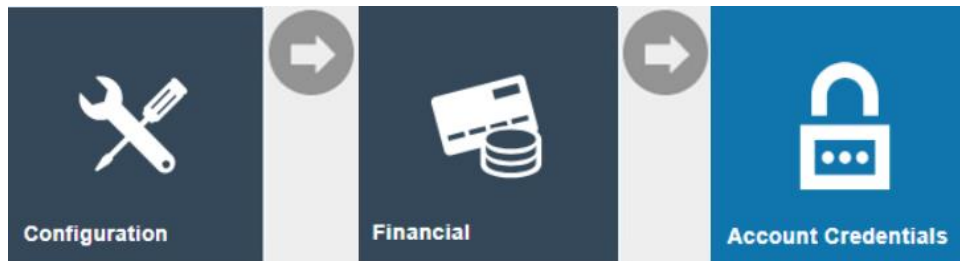
Template: Standard POS Terminal Template [Change Template](#)

* Denotes Mandatory

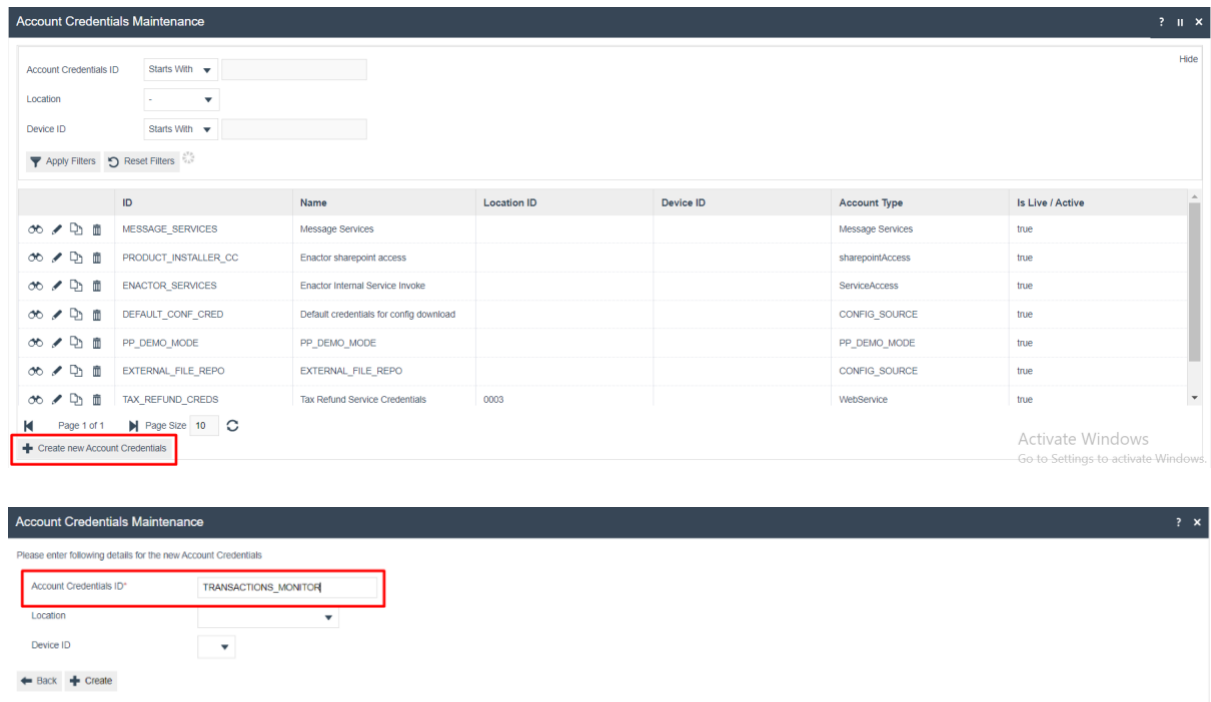
Account Credentials Maintenance

A credential must be added in Account Credentials Maintenance.

Navigate to Account Credentials Maintenance using the Search or the path Configuration -> Financial -> Account Credentials



Select **Create new Account Credentials**:



Enter Account Credentials ID **TRANSACTIONS_MONITOR** and select Create.

Account Credentials Maintenance

Save Cancel

You are editing Account Credentials ID 'TRANSACTIONS_MONITOR' in location " of device "

General Other Properties

Account Type*

Name*

Is Live / Active

User ID

Account ID

Account Qualifier

Use System Key

Prefer Signed On User Credentials

Change Password

* Denotes Mandatory

On the General tab, add the following parameters:

| Configuration | Value |
|------------------|-------------------------|
| Account Type | Monitoring |
| Name | Transactions Monitoring |
| Is Live / Active | Ticked |

Account Credentials Maintenance

Save Cancel

You are editing Account Credentials ID 'TRANSACTIONS_MONITOR' in location " of device "

General Other Properties

| Property Name | Write Only | Type | Value |
|---------------|--------------------------|--------|-----------------------|
| monitoringTag | <input type="checkbox"/> | String | TransactionProcessing |
| Add Property | <input type="checkbox"/> | String | |

On the Other Properties tab, add the following parameters:

| Configuration | Value |
|---------------|-----------------------|
| Property Name | monitoringTag |
| Type | String |
| Value | TransactionProcessing |

Broadcasting Data

To deliver the configuration changes to the POS, broadcast the following entities:

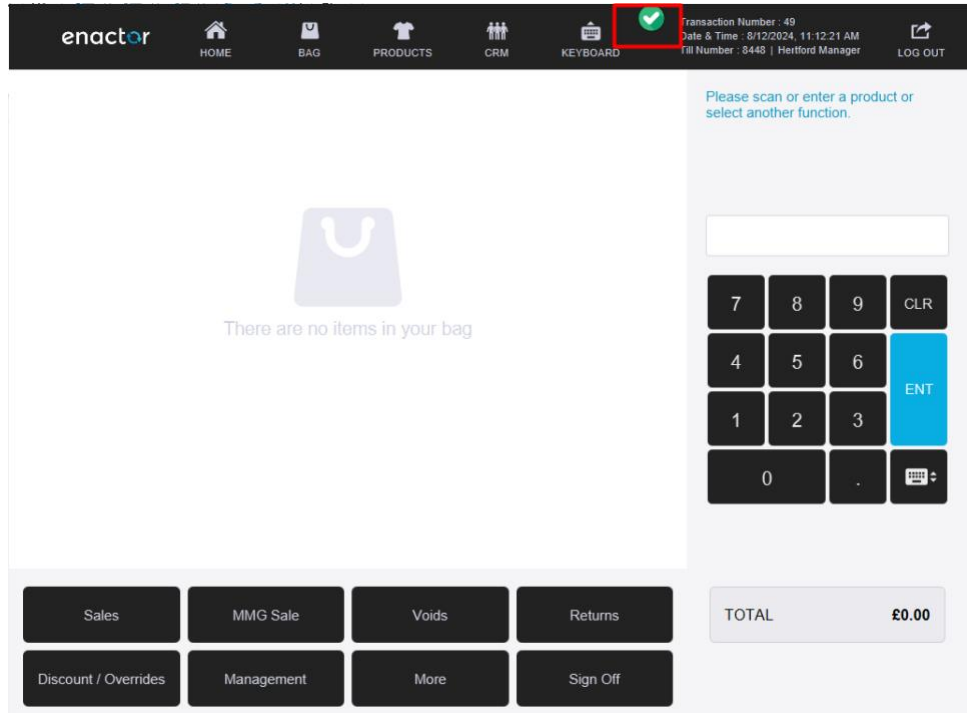
- POS Terminal
- POS Terminal Template
- Account Credentials

POS functionality

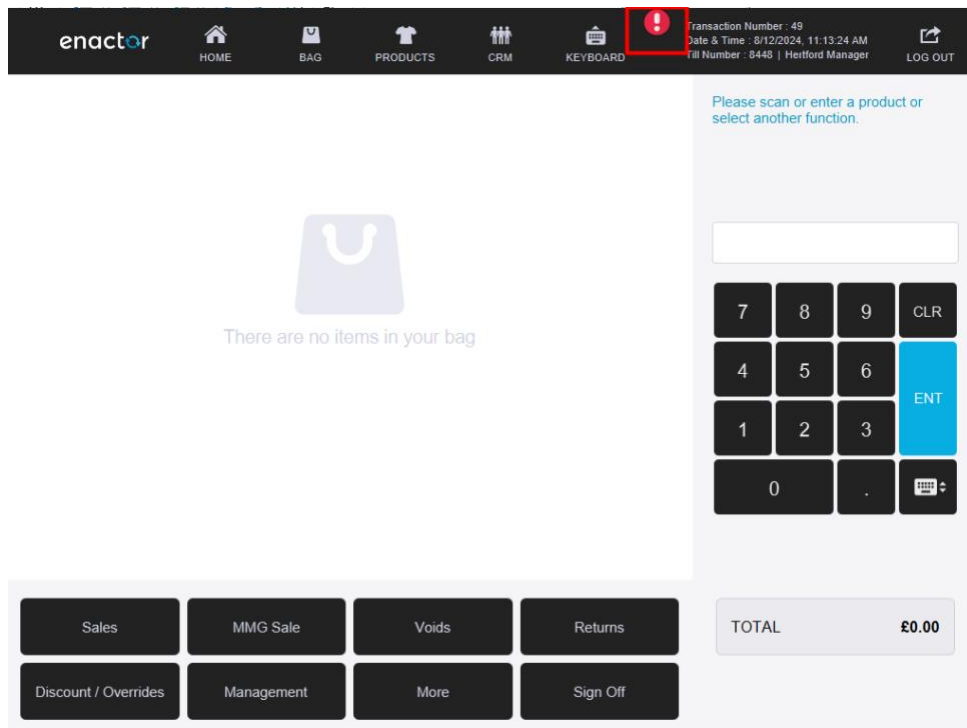
Once the configuration changes are broadcast to a POS, both the POS application and the Enactor POS Services should be restarted (alternatively reboot the machine).

The online-offline indicator is added to the POS screen as shown below:

POS Online



POS Offline



About This Document

©2024 Enactor Ltd

All documents produced by Enactor Ltd are supplied to customers subject to Copyright, commercial confidentiality and contractual agreements and must not be copied or transferred without permission.

The amendment history of this document can be found in the table below.

Document Context

This document is part of the Enactor Product Documentation Series. All Enactor products include a comprehensive documentation set designed to improve understanding of the product and facilitate ease of use.

Document Inquiries

At Enactor we aspire to producing the highest quality documentation to reflect and enhance the quality of our product. If you find that the document is inaccurate or deficient in any way, please assist us in improving our standard by letting us know.

For matters of document quality or any other inquiries regarding this document please contact:

By Email: documentation@enactor.co.uk

Document History

The following versions of the document have been produced:

| VERSION | STATUS | ISSUE DATE | AUTHOR | REASON FOR ISSUE |
|---------|---------------|------------|------------------|------------------|
| 1.0 | Initial Draft | 12/08/24 | Rasangi De Silva | Initial version. |